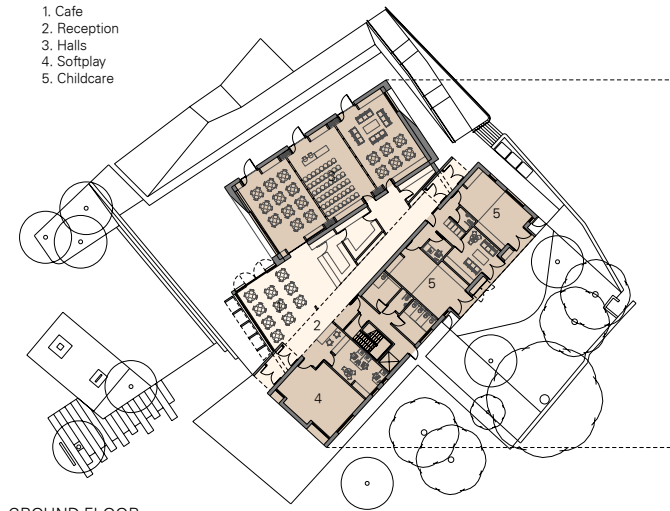




1. Cafe
2. Reception
3. Halls
4. Softplay
5. Childcare



GROUND FLOOR

GOREBRIDGE COMMUNITY HUB

The new Community Hub in Gorebridge, Midlothian is currently onsite, with the superstructure almost complete. The community and Gorebridge Community Development Trust fought to gain support and funding for a significant new building in the middle of the town that is intended to act as a catalyst for wider regeneration and provide inclusive and flexible modern public facilities. Such facilities are in short supply in Gorebridge and this has been associated with the lack of cohesion across the community. This new building will provide a new hall, café, crèche, childcare facilities, offices and meeting rooms in a single building that sits in its own landscaped grounds adjacent to the local parish church, the leisure centre, library and new primary school.

The new building, clad in locally sourced timber, has a strong sustainable agenda and will provide bright and attractive community space that is sufficiently flexible to permit a wide variety of different uses and is arranged to encourage social interaction. It is hoped that the new building will support and help integrate the activities and accommodation in the other adjacent buildings, forming a critical mass of connected public facilities.



Client : Gorebridge CDT
Value : £2.5 million
Completion : 2015